

Coloring Mythical Maidens

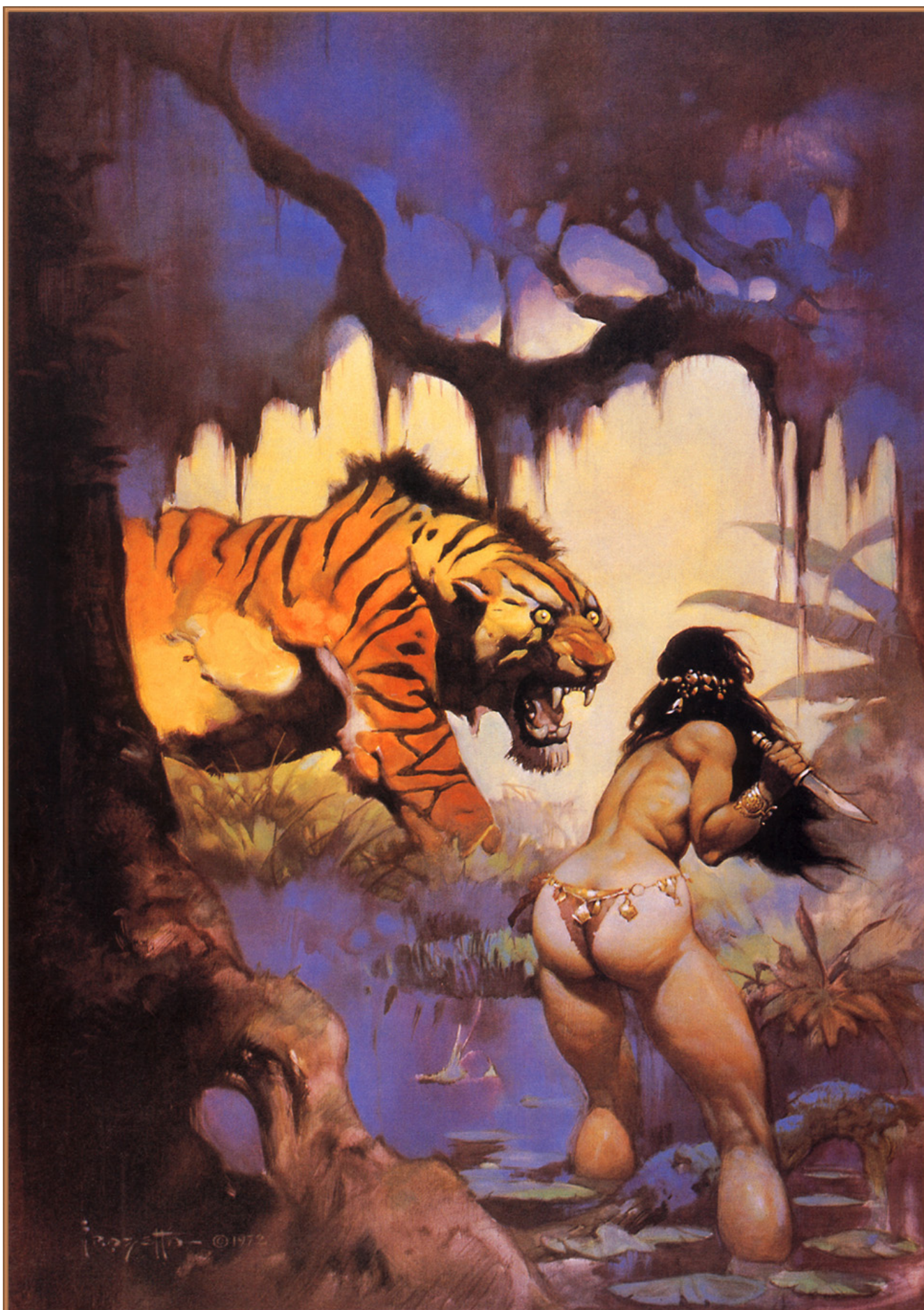
Reference Photos

This month I've included reference photos from the great pulp fictions painters from the 60's and 70's. I've included photos from Frank Frazetta, Boris Vallejo, and The Brothers Hildebrandt. These artists in particular epitomize the genre. If you're not familiar with any one of these artists, I would encourage you to look them up, as nearly all of their works are awesome.

With regard to using these reference photos along with your class materials, I would recommend that you carefully study the reference photos, paying close attention to color scheme, brush stroke, and particularly the way most of these artists use dark shapes in the foreground to create space. While none of these photos are necessarily directly related to the other images in this class, careful study of these reference photos will give you numerous ideas on how to color every page I've drawn this month. If I were going to color these pages, these are the reference photos I'd be looking at.

Frank Frazetta



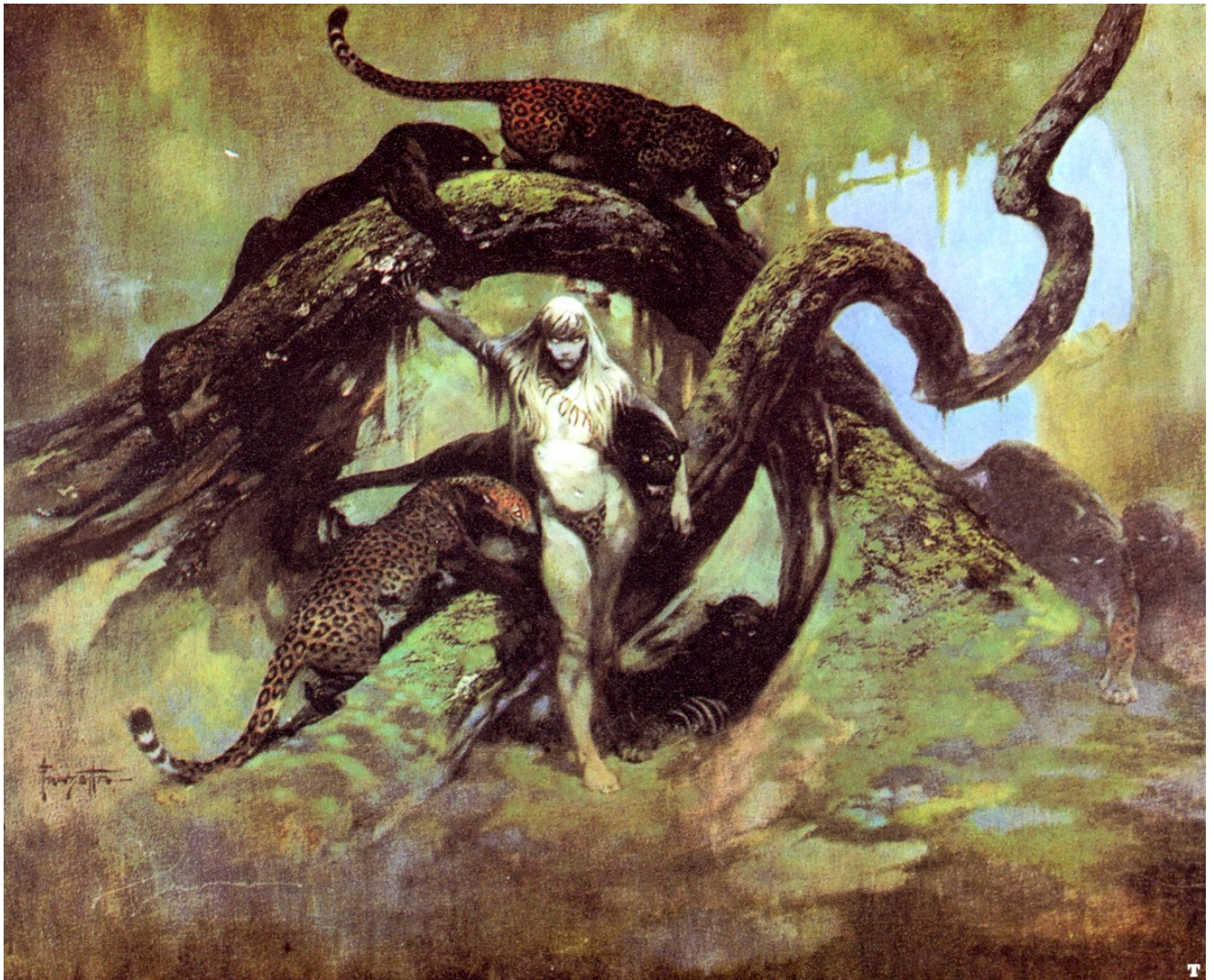


Frank Frazetta

Escape on Venus

QMan





Boris Vallejo









The Brothers Hildebrandt



