

COLORING CAMILLA

Introduction

Happy new year!

To get things started off on the right foot, in this class we will be learning to color in the style of Camilla d'Errico.

Mrs. d'Errico creates lovely drawings and paintings in a hyper cute, high chroma style, and we will be learning to imitate her painting style with markers or pencils.

If you're not familiar with this artist, you should look her up! I'm pretty sure you're gonna love her work.

Now... let's get coloring!

Copic Colors Used For The Class Page

(Refer to the color conversion chart for non Copic alternatives.)

E0000		BV23
E000	B000	BV31
E13	B00	
E29	B12	BG49
E40	B24	
E70	B26	R00
	B32	R08
T3		R20
T6	YR04	R32
		R56
G24	Y02	R59
G46		R85

Chapter One:

Coloring The Face



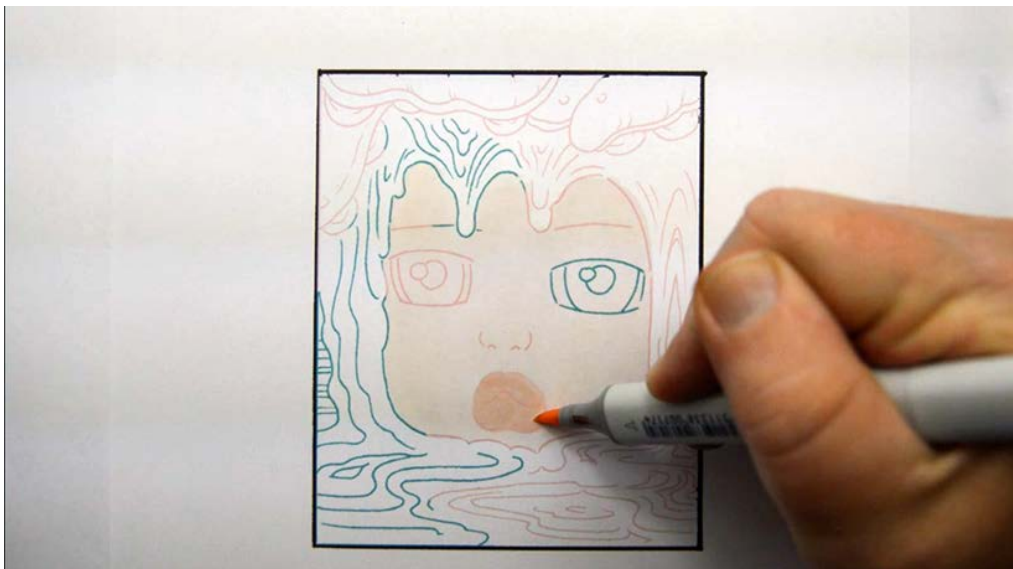


For this class we will be using a colored line drawing since Mrs. d-Errico's paintings have very few outlines.



To begin, I lay in a flat and very even wash of E0000.

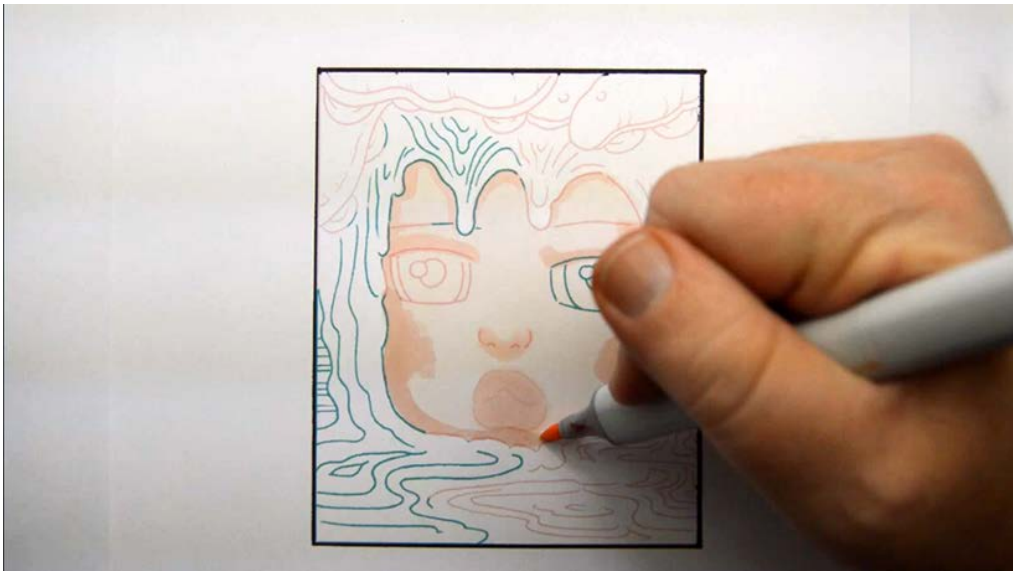
I'm coloring on regular printer paper, so I match my hand speed and pressure to match the paper's absorbency.



I add a flat layer of R00 to the lips...



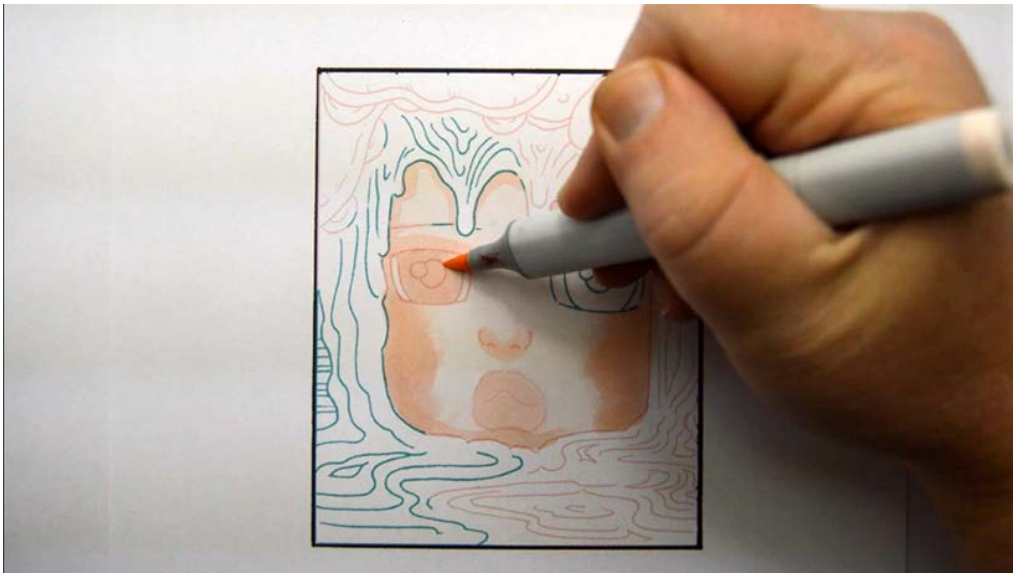
...and to the bottom of the nose. (R00)



Continuing with the R00, I add "blush" to the cheeks and contour the sides of the face.



Using the broad side of the R00 markers, I "feather" the edges of the "blush".



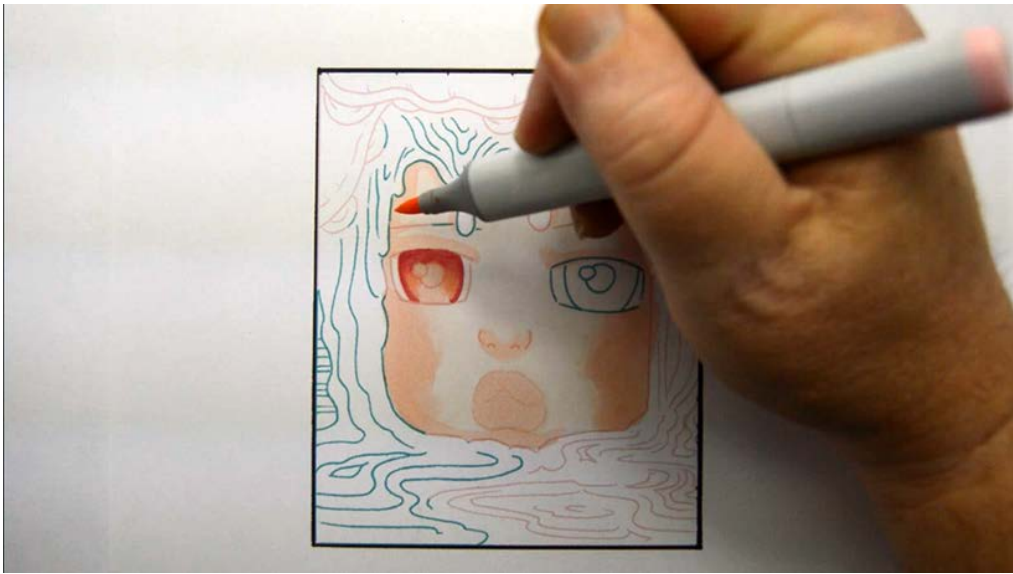
I then add R00 to the left iris.



After the R00.



I add R85 accents to the top portion of the iris.



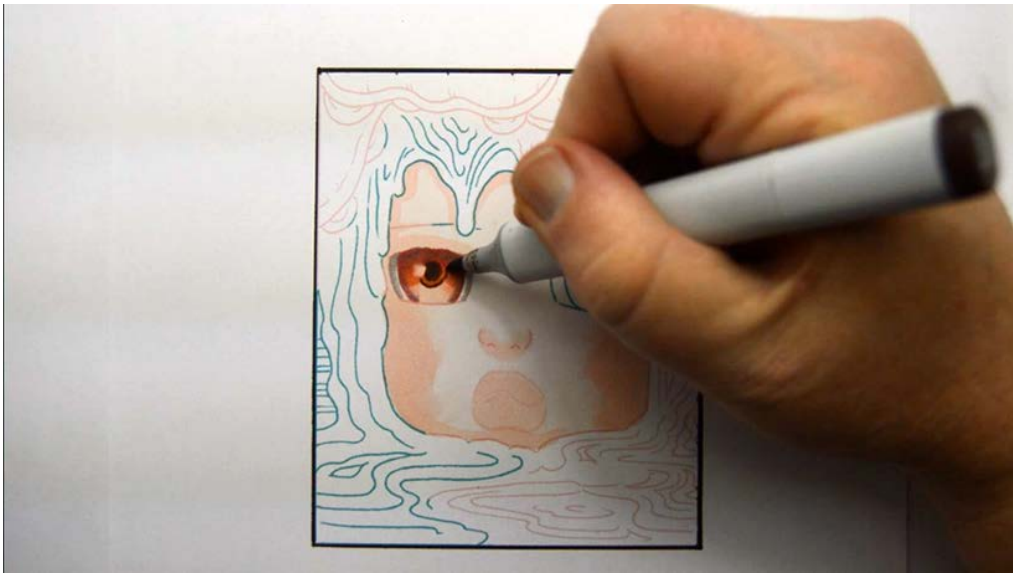
I then soften the R85 with R20.



I add T3 to the iris and to the contours of the eye.



I then add E13 to the iris and pupil.



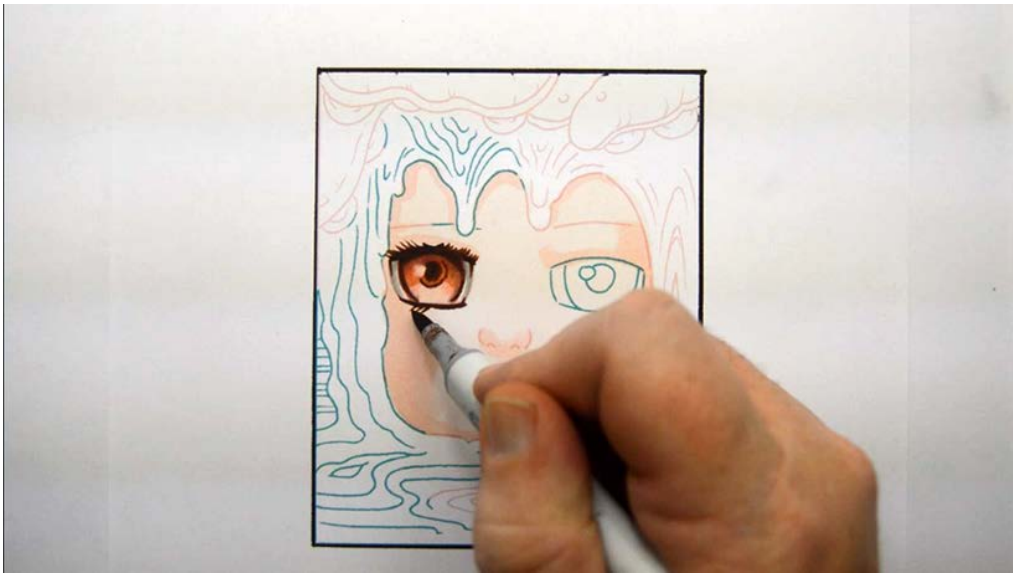
I add dark accents with E29...



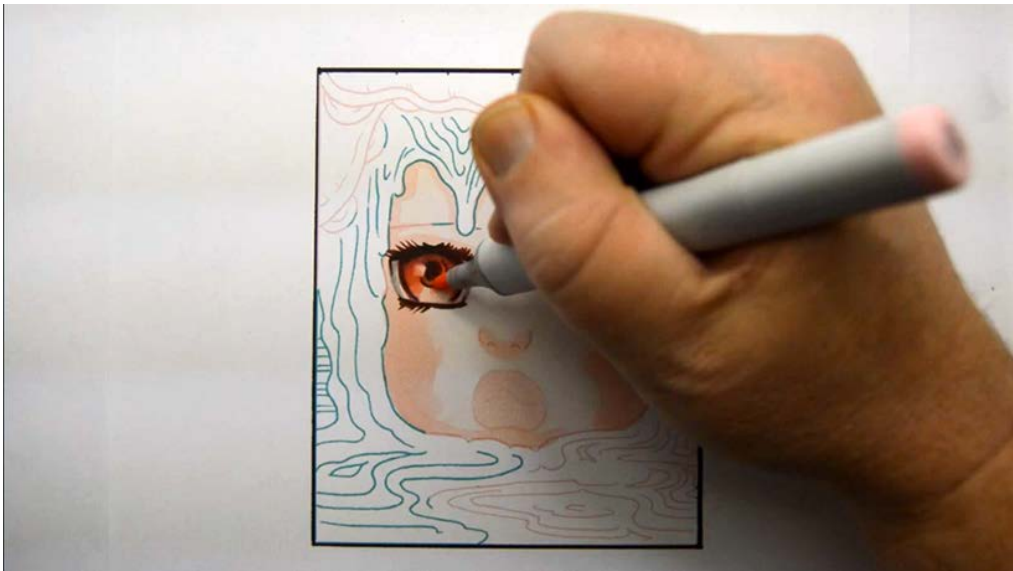
E29



E29



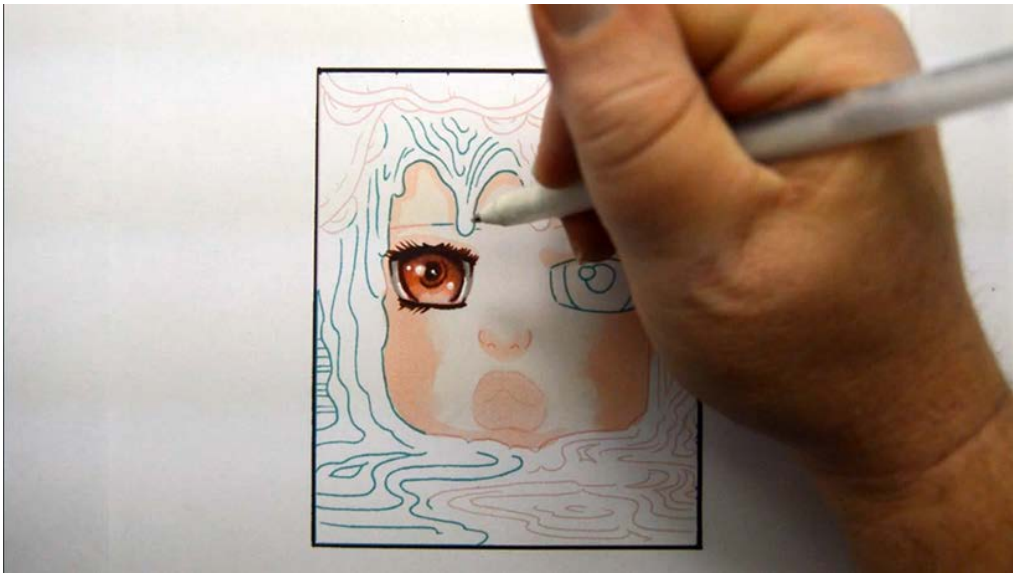
E29



I then soften the colors in the iris with R20.



Ready for highlights.



I add "catch lights" to the eye with a #10 white gelly roll pen.



For the right eye I'll be following the same procedure of coloring light to dark, but I'll be using hues of blue instead of pink!

I begin with B000.



B12



BV23



T3



E31



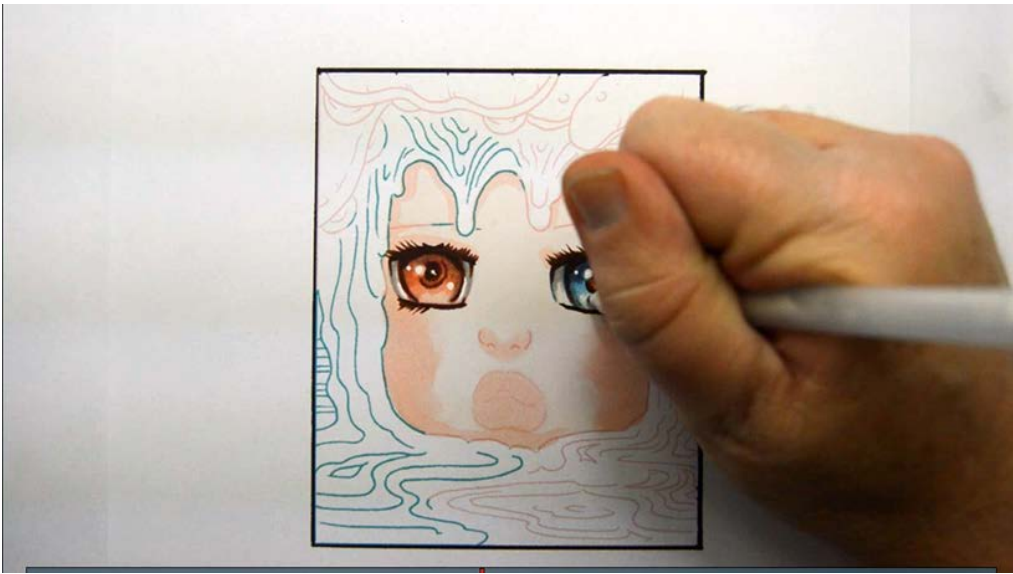
E29



BV23 to soften.



White gelly roll pen...



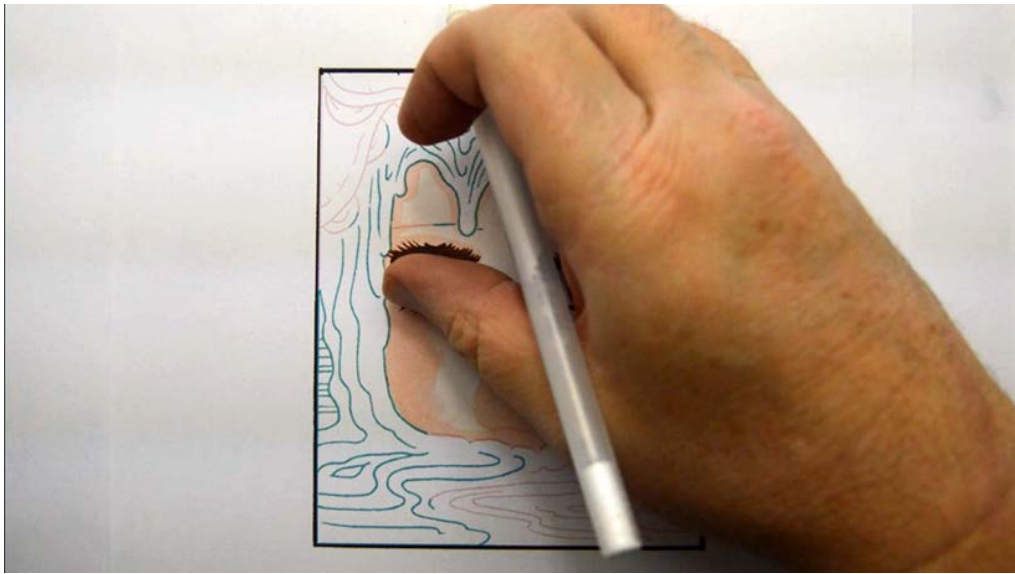
I add white to the lightest area of the iris...



...then soften it with a quick finger rub.



I do the same to the other eye... white...



...rub...



Done! :)



With the eyes more or less complete, I turn my attention to "rounding" the face by adding cool colors. I begin with E40.



E40



E40



E40



E40



After the E40.



Next I add B000.



B000



B000



Don't be alarmed. It's all gonna work out fine!



I soften the areas of E40 and B000, first with R00...



(After the R00)



...and then I soften some more with E000...



E000



After the E000.



I then lay in a very heavy overall layer of E0000. I use heavy pressure and saturate the paper with ink...



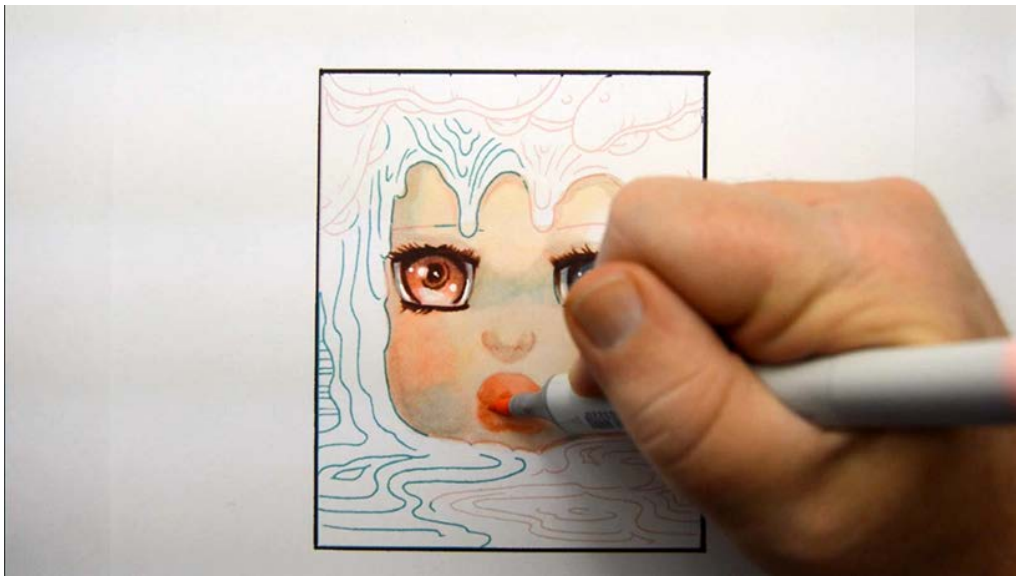
...until everything is nice and soft. (E0000)



I add R11 to the lips.



I delineate the division between the lips with E13.



I soften the E13 with R20.



After the R20.



I add dark accents to the lips and nostrils with E29.



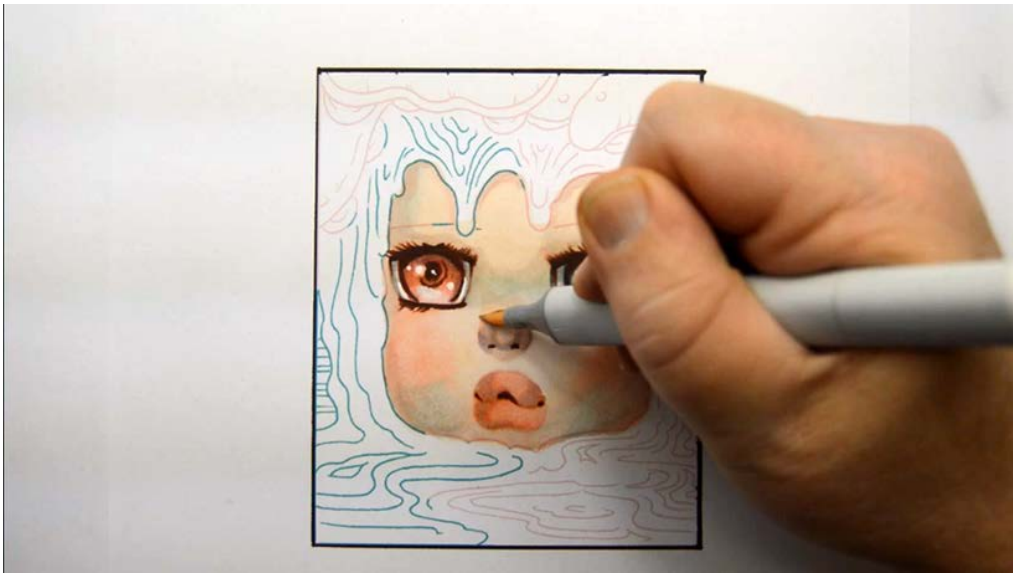
I then "round" the forms of the lips with BV31.



Continuing with the BV31, I add shadows to the nose.



I soften the BV31 on the nose with R00.



I then soften the nose again with E0000.



Getting close :)



I add a cast shadow under the nose with R11...



...then accent that shadow with E70.



I add touches of E70 to the inside edges of each eye...



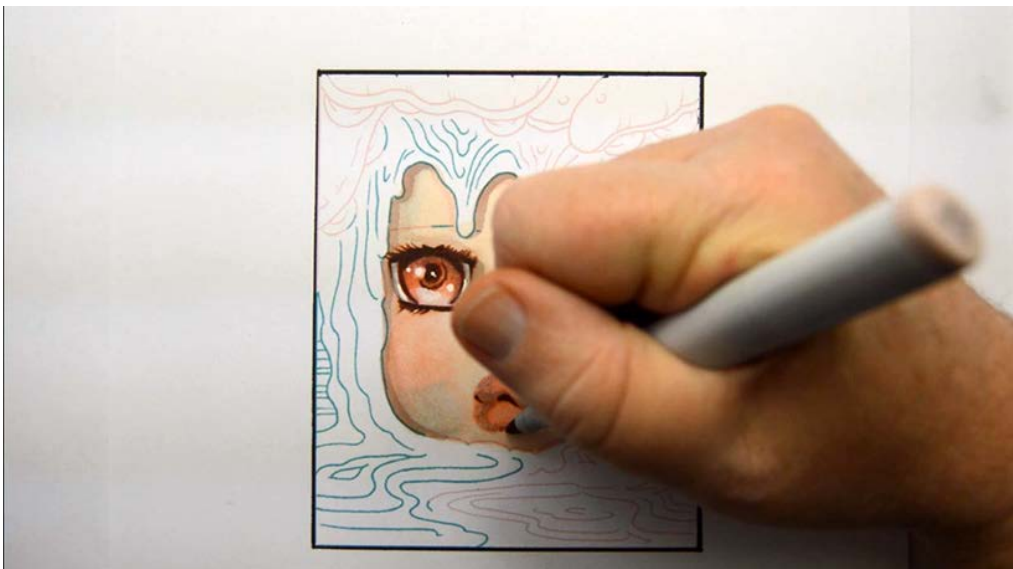
...and to the lips. (E70)



Continuing with the E70, I add contour to the sides of the face...



E70



I add a small cast shadow under the bottom lip. (E70)



After the E70.



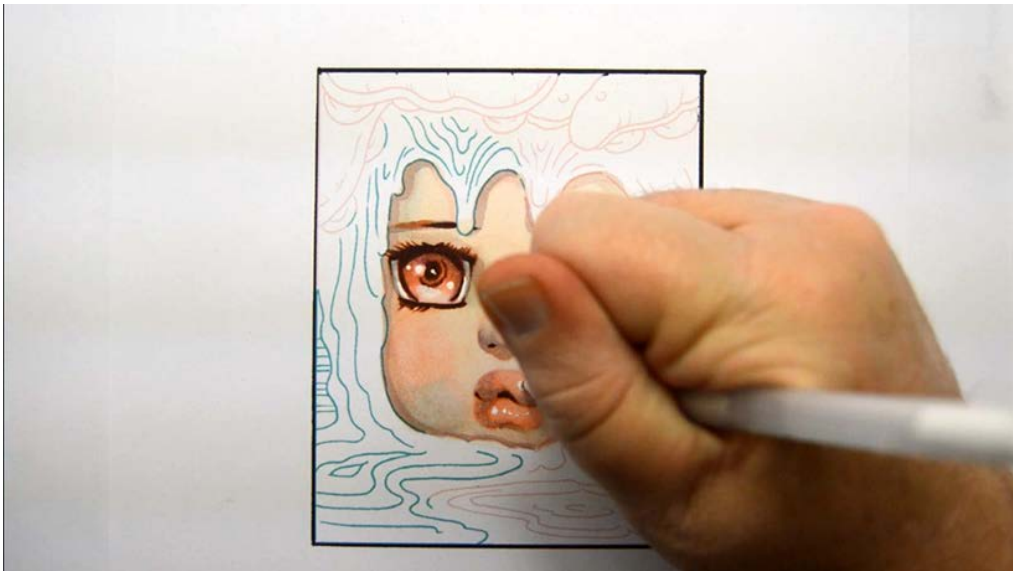
I "line" the eyebrows
first with E70...



...then with E29...



...and finally with E13.



Using my #10 white gelly roll pen, I add highlights to the lips...



...nose...



...cheeks...



...and eyes...



...to finish off the face. :)

Chapter Two:

Coloring The Background



With the face complete we can now turn our attention to the background. Before we begin I need to tell you something. Probably more than any other class I've done to date, in this class there is absolutely no way you will be putting your colors in exactly the same place as mine. The truth is, you don't even need to use exactly the same colors I use. So for this chapter, just use these instructions as a guide. As long as you use similar colors in relatively similar places your image is going to turn out awesome!



I begin with B32.



I then apply BG49.



I add B12...



B00



B24



B26



I then add small touches of YR04.



I add more B12 here...



...and there. (B12)



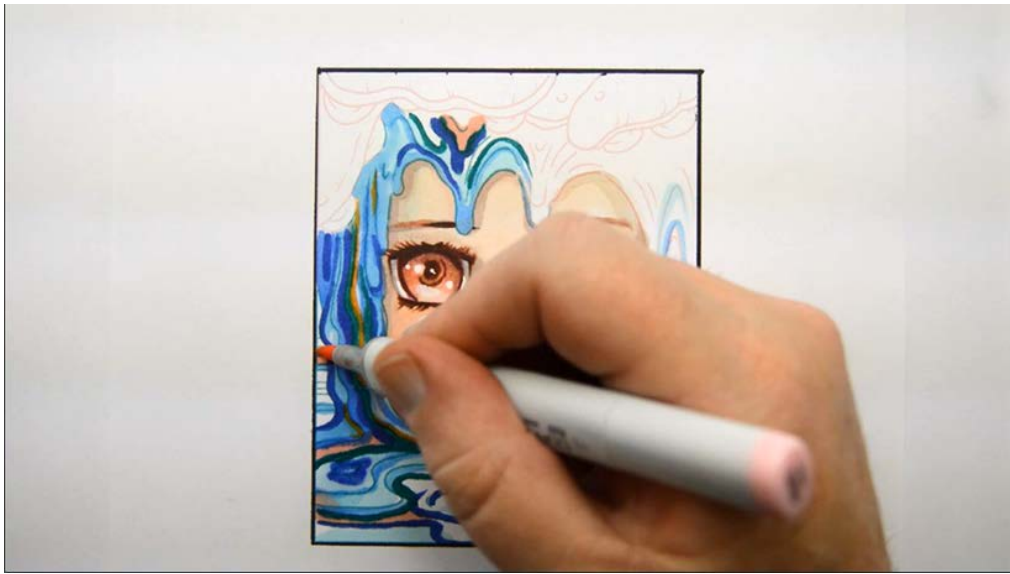
Next I apply B000.



After the B000.



I add accents of R20 here...



...and there. (R20)



So far so good!



I add BV31...



BV31



...and BV23



After the BV23.



I add a darker blue B26...



B26

The "blue side" is complete for now.



Switching to the other side, I begin with Y02.



I then add YR04



R32



R85



G24



E13



E13



E13



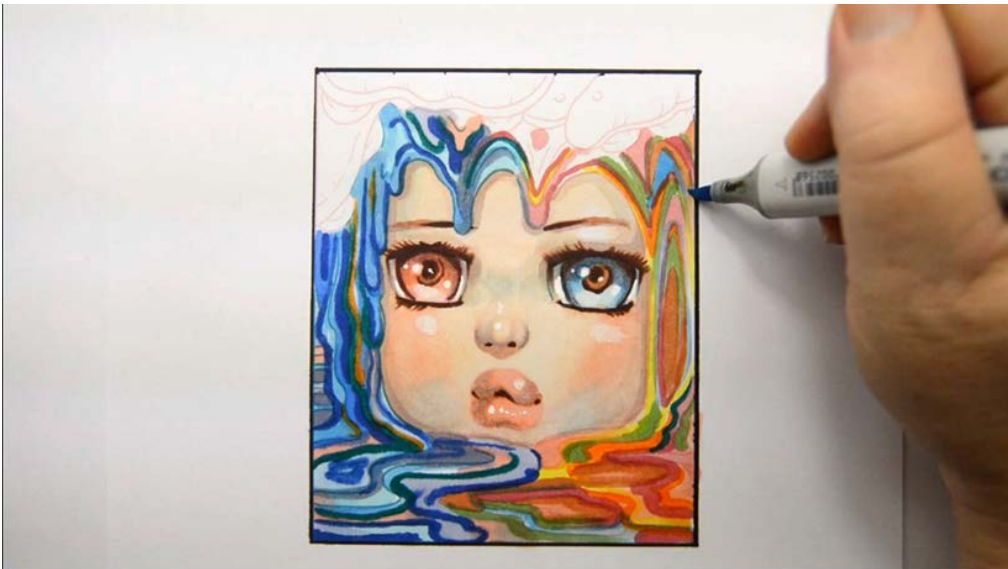
Getting there :)



Next, I add R20.



After the R20.



B12



B12



After the B12.



I add dark accent lines with B26.



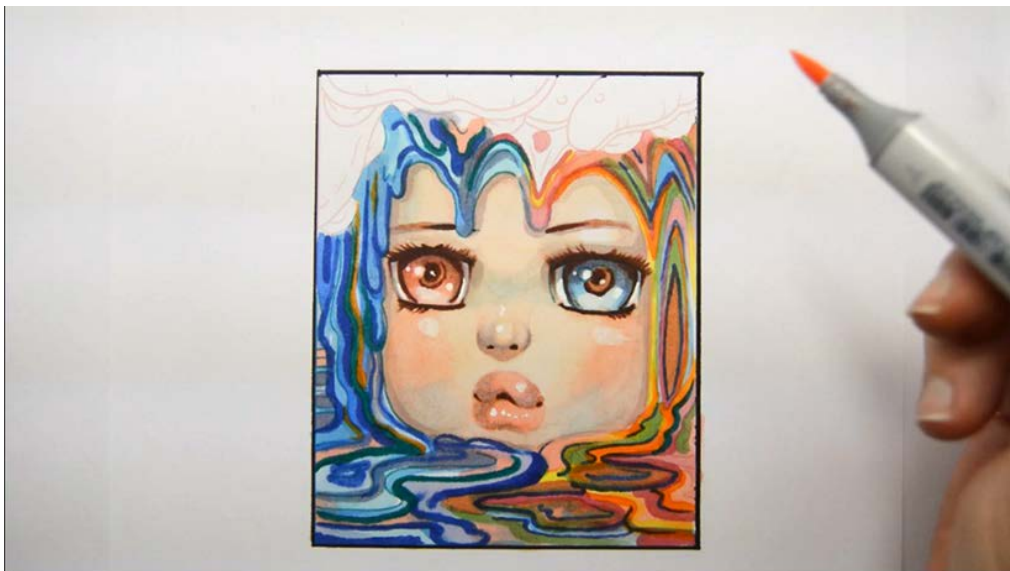
B26



After the B26



I add a little more YR04



R20



B12



G46



G46



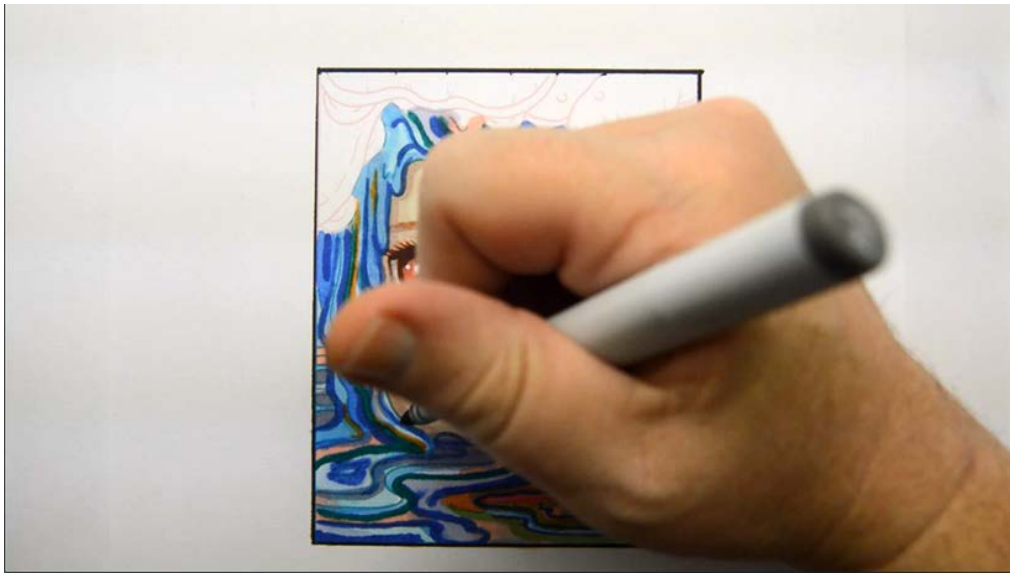
and B24.



Finally, I "draw in" dark accent lines on both sides with T6.



T6



T6

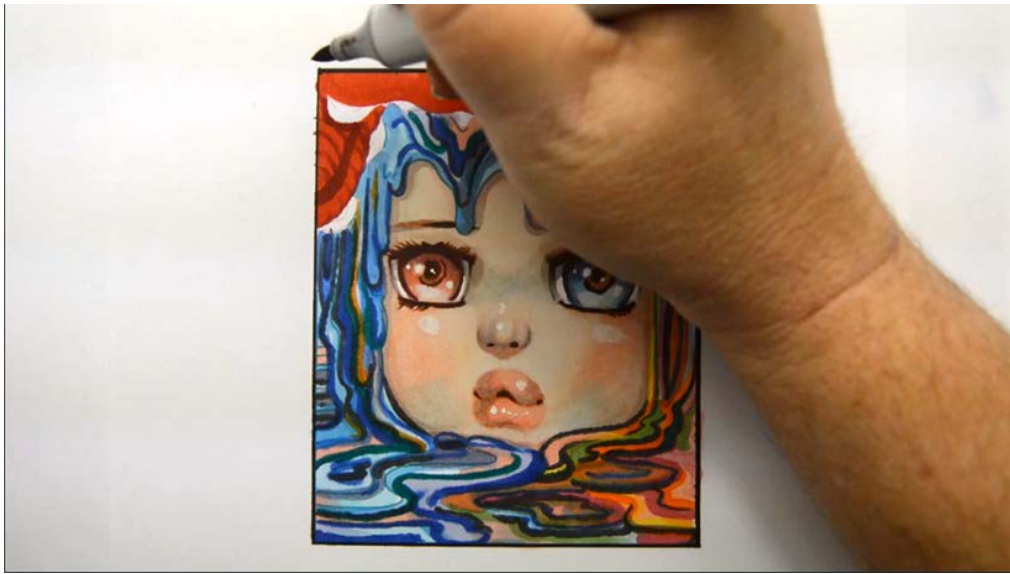


After the T6.

Again it's important to emphasize that there is no need to use the exact same colors in exactly the same places! Just follow your instincts and everything will be just fine.



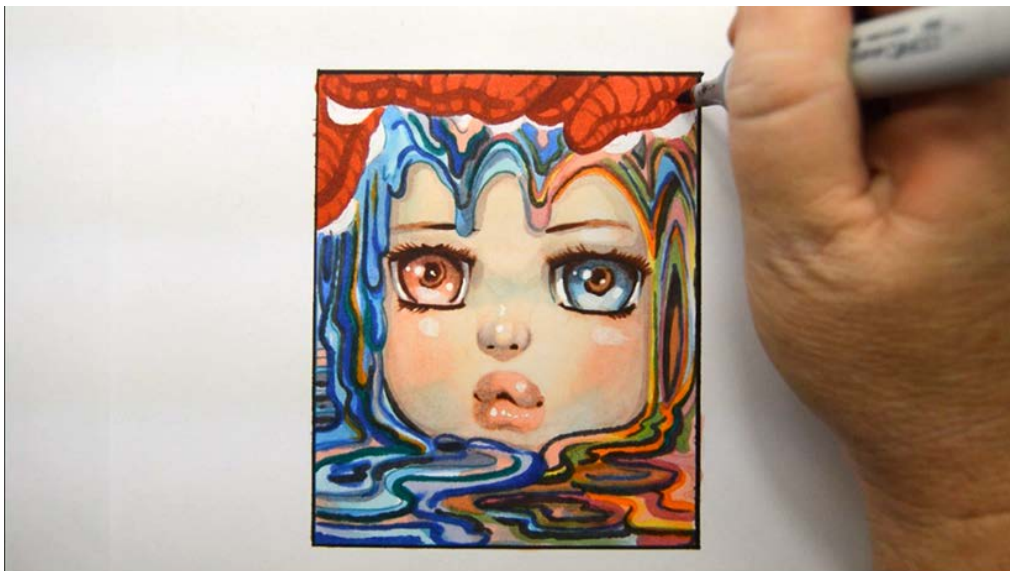
To finish off the coloring process, I color the tentacles on top of her head with a flat base color of R08. (The little white areas are suckers.)



I "draw in" some details with R56



R56



R56

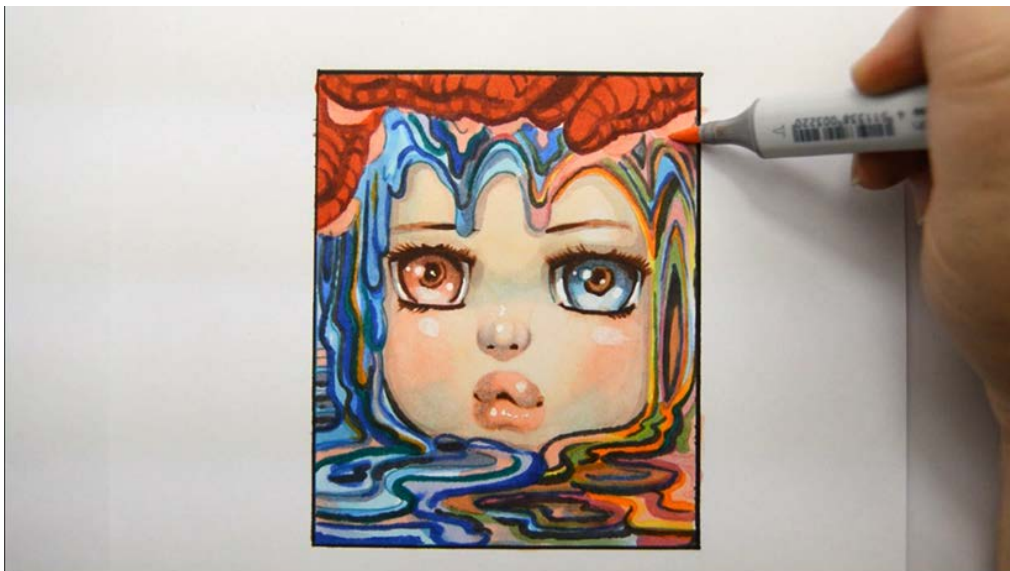


...then add darker accents with
R59



R59

Now let's address those
suckers!



R20



E13...



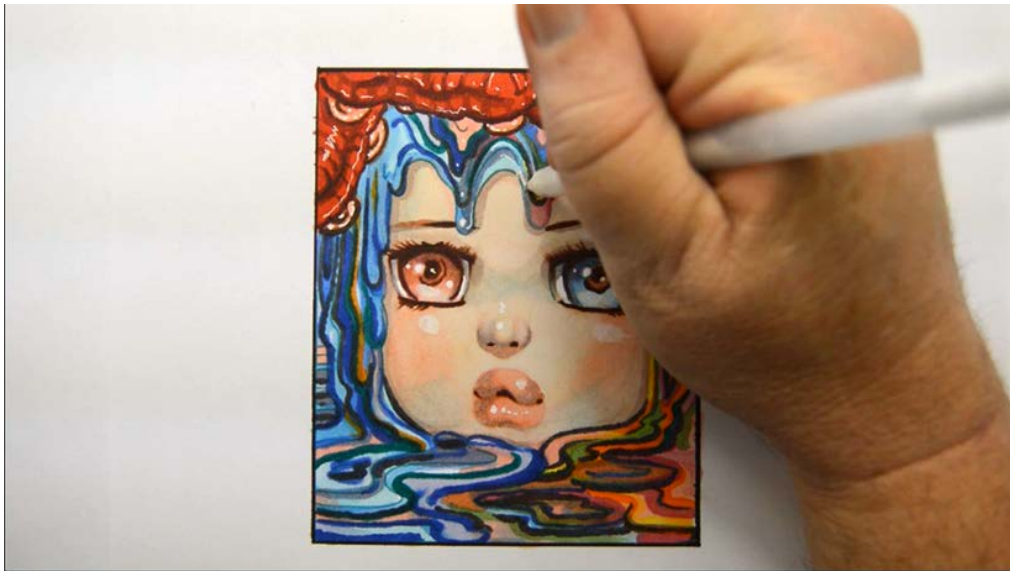
...and E29.



Ready for highlights!



Using a #10 white gelly roll pen, I begin to add highlights here and there and everywhere. For your image use your best judgement!



White highlights



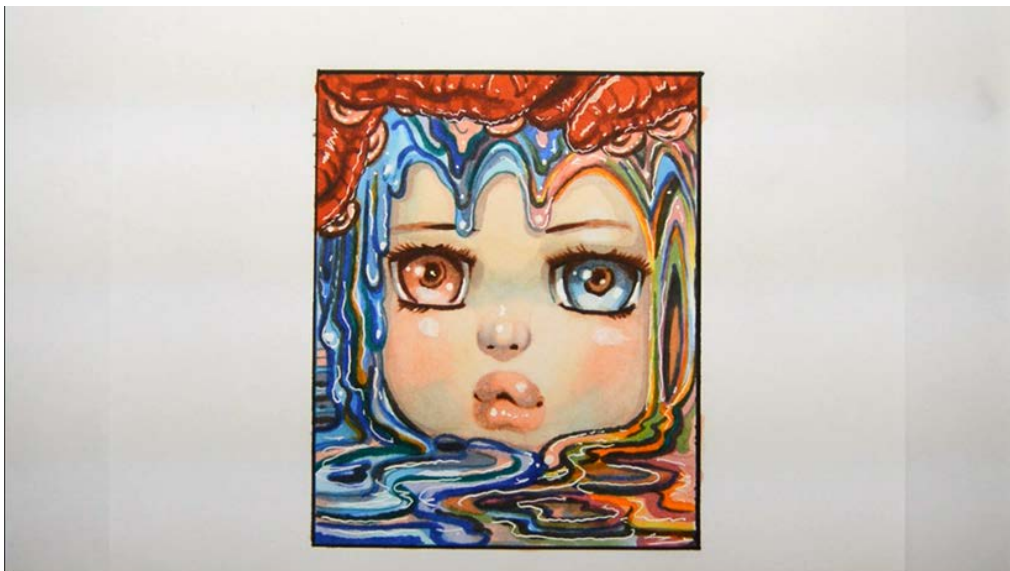
White highlights



White highlights



White highlights



...and done. So there you have it - a unique work of art as individual as you! As a final reminder, don't stress! Just follow along, add your colors and highlights, and you'll be fine!

Until next time...
Christopher Kerry